

glass^{FOR}ever

SUPREME PLASTIC SOLUTIONS

FOR RESTAURANTS, NIGHTCLUBS,
HOTELS, BAREFOOT AREAS,
CATERING, CONFERENCES, ETC.





14



6



18

Contents

- 3 glassFORever
- 4 FOR the environment
- 6 Strength pays
- 8 FOR a healthier and lighter working environment
- 10 FOR significant long-term savings
- 12 FOR greater customer satisfaction
- 14 FOR more smiles
- 16 FOR unique glassware
- 18 Product overview
- 50 FOR longer durability

GLASSFOREVER

We are a Danish company that develops innovative solutions within plastic glassware, our main focus being functionality, product safety and the environment – reuse & recycle!

Therefore our products are ideal for restaurants, cafés, bars and nightclubs. However, canteens, hotels, hospitals, institutions, schools and prisons also benefit greatly from using glassFORever’s safe and light products.

Together with our customers, we will lead the way at developing new products and offer drinking glasses and other products that never break as well as accessories tailored to individual markets.

glassFORever is ISO 9001:2015 certified.

GLASSFOREVER FEATURES:

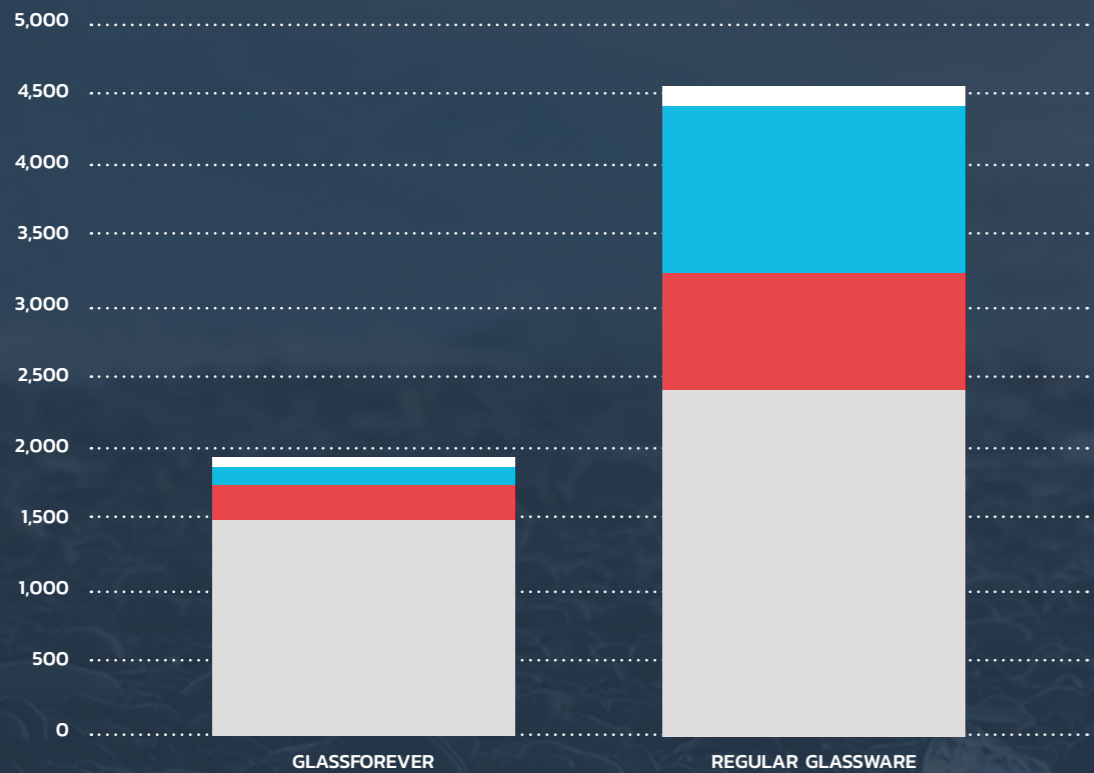
FOR THE ENVIRONMENT

Even though plastic causes so much damage to the environment, buying products from glassFORever is a green and climate-friendly investment. We recycle **100%** of our products, and we have created a recycling system that takes responsibility for the environment.

After use, our products are not discarded in the rubbish bin. Instead, we collect and transport them to our factory in Denmark, where we grind the used material and use it to produce new, recyclable and eco-friendly products. No waste. 100% recycled. This makes us feel proud.

You might also be surprised by our low CO₂ footprint?

EMISSIONS OF CO₂ EQUIVALENTS



SOURCE: greenmachine



100% RECYCLING
100% REUSEABLE



ENVIRONMENTALLY
FRIENDLY

“ *The environmentally friendly alternative to disposable products, disposable glasses and single-use cups. The future is recycling and reuse.* ”



THE RECYCLING SYSTEM

When you have used your reusable, recyclable and environmentally glasses for many years, we take them back. And then we grind them and make new products.

It is the recycling system that is important if you want to make the world a better place. No waste. 100% recycled. The glassFORever recycling system takes responsibility for the environment.



UNBREAKABLE
MATERIAL

GLASSFOREVER FEATURES:

STRENGTH PAYS

At glassFOREver, we manufacture drinking glasses. But not just ordinary drinking glasses.

Where ordinary glasses can break and leave broken glass shards which cause problems and are hazardous for people, our specially developed plastic glasses are 100% unbreakable, which ensures a high sense of security and safety.

The material is crystal clear and produced with a thick, solid base. The products have been tested by independent laboratories, and when we say the glasses are unbreakable, well, that's because it is true.

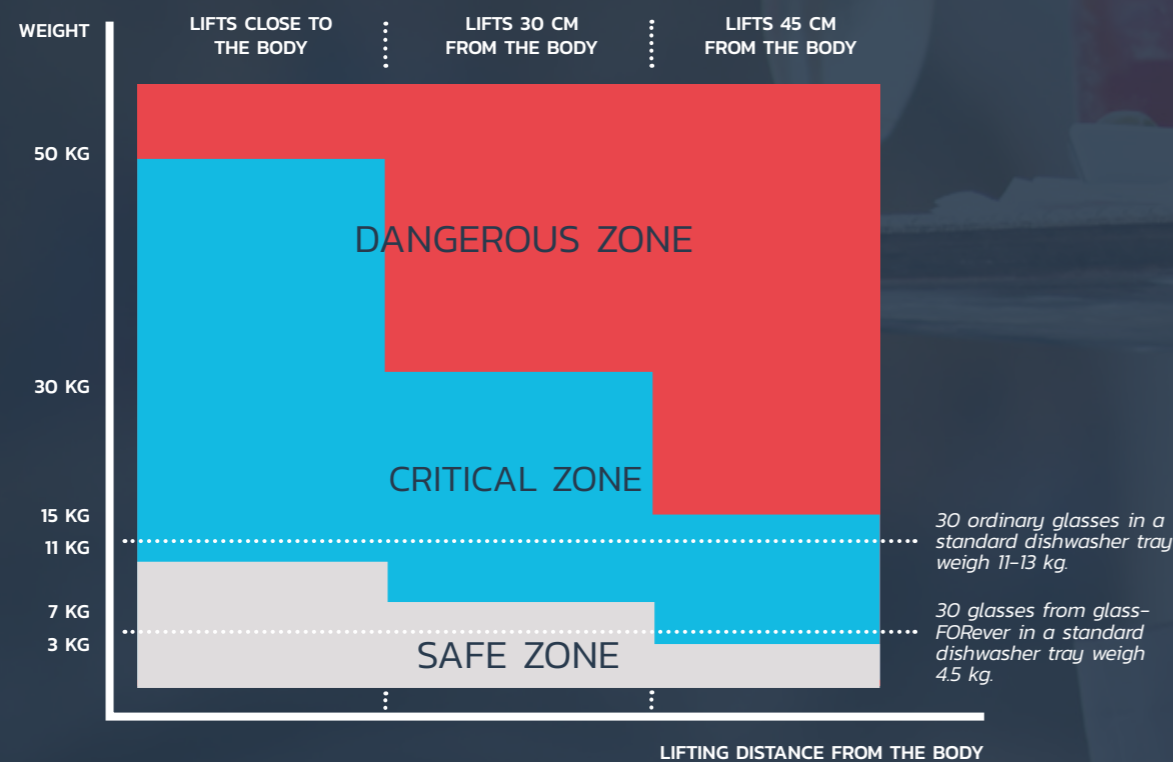


GLASSFOREVER FEATURES:

FOR A HEALTHIER AND LIGHTER WORKING ENVIRONMENT

One of the biggest advantages of using our products is that they do not weigh as much as ordinary glassware. A dishwasher tray filled with ordinary glasses can easily weigh 11-13 kg, while a tray with glassFORever products weighs only 4.5 kg. In other words, the glasses weigh 66% less!

The products can therefore make a significant and positive impact on the working environment in kitchens, canteens, bars and places where staff are handling glasses every day. Lifting, pulling and pushing heavy objects is a frequent cause of occupational injuries and thus sickness absence, but the risk of this happening is markedly reduced when using glassFORever products. Acquiring our specially produced plastic glasses can have a positive impact on staff sickness absence, and therefore also on your bottom line.



SOURCE: Recommendations from the Danish Working Environment Authority, May 2016

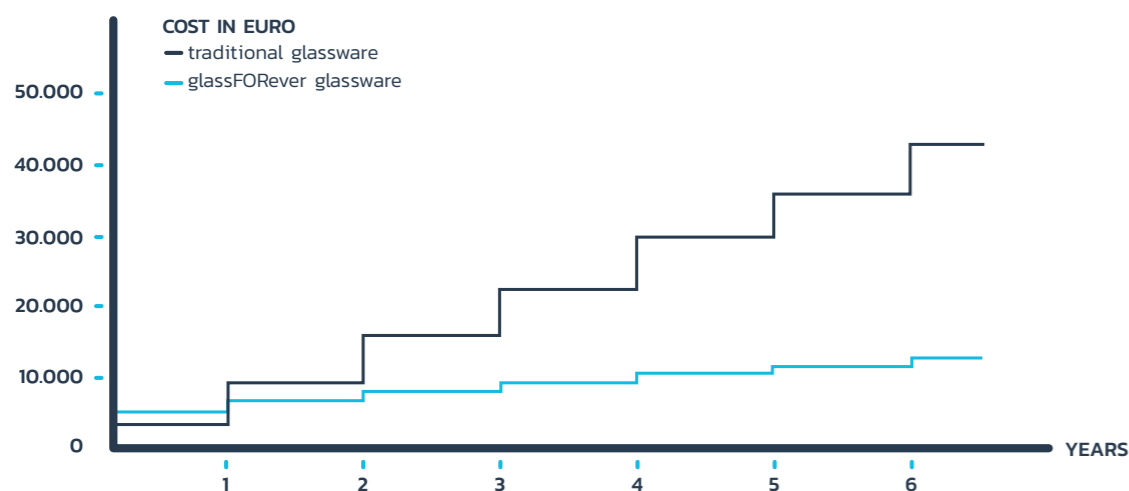


FOR SIGNIFICANT LONG-TERM SAVINGS

Products from glassFORever last 20 times longer than ordinary glasses because of the material. Our glasses don't need to be replaced as often, which leads to considerable cost savings. If a nightclub purchases 3,200 glasses at start-up, our survey of 100 nightclubs shows that over

three years it's possible to save 59.4% on glass purchases by buying products from glassFORever at the outset instead of purchasing conventional glassware.

This is something that shows on the bottom line.



The calculation covers 100 nightclubs, and is based on an average nightclub that needs 3,200 glasses at start-up. As the products from glassFORever last up to 20 times longer than ordinary glasses, the need to continuously replace stock is markedly lower. Calculated over three years, it equates to a total saving for the nightclub of 59.4%.

The example is calculated on the basis of glassFORever glasses, which are completely comparable in terms of their design and appearance, and based on list prices at the time of the survey.



LUXURY
PLASTIC GLASS



LONG LIFE
AND WASHABLE

Over three years, having glassFORever products equates to total savings of 59.4%



FOR CUSTOMER SATISFACTION

At glassFORever, we offer all customers a five-year warranty on our glassware. This means that if a product cracks or breaks within the first five years, glassFORever will replace your product with a new one free of charge.

A warranty that shows on the bottom line.



-year warranty on all products from glassFORever

The warranty does not cover scratches, limescale residues or discoloration. The warranty does not apply to products made of SAN, our LIGHT series or PRIVATE LABEL products unless otherwise agreed.

Follow our washing instructions for best results.

FACTS ABOUT GLASSFOREVER

FOR more smiles and fewer sick days

One of the major advantages of glassFORever products is their relatively low weight. The plastic glasses weigh only a third of what regular glasses weigh, and this can be hugely significant for the working environment. When the work is lighter, employees smile more, and then there is a good chance that productivity improves as well as the bottom line.



5-YEAR WARRANTY
on products that cracks
or breaks

PRODUCTION IN DENMARK
CE-labelled and approved for
food use

DURABLE
each product can be washed
more than 2,000 times

STACKABLE
the products are easy
to stack

ECO-FRIENDLY
100% reusable &
100% recycling

EASY CLEANING
wash the same way as
conventional glassware

HIGH QUALITY
thick base, crystal clear and
indestructible

BETTER WORKING ENVIRONMENT
lighter, and no accidents with
broken glass

HIGH INSULATION PROPERTIES
resistant to heat or cold, and can be
frozen in 5 minutes

FOR UNIQUE GLASSES – OUR PRIVATE LABEL

At glassFORever, you can design your own products. They can be tailor-made to suit your exact needs and those of your customers. The sky is basically the limit. We can make them just as you wish.

If you require further information or would like a quote, please do not hesitate to contact us.



” As a retail chain, we can order glassware with our own company’s logo. This is great, even though customers occasionally take glasses home as ‘souvenirs’, but that also has some marketing value.

Henrik Karlsen, NOX Network.



PRODUCT DEVELOPMENT STEP BY STEP:

1

SELECT THE DESIGN

– create a new design or use an existing one from our catalogue



2

SELECT MATERIAL AND COLOUR

– take a look at our material chart and select crystal clear or coloured glassware



3

SELECT A LOGO

– coloured, engraved or printed?



PRODUCTS

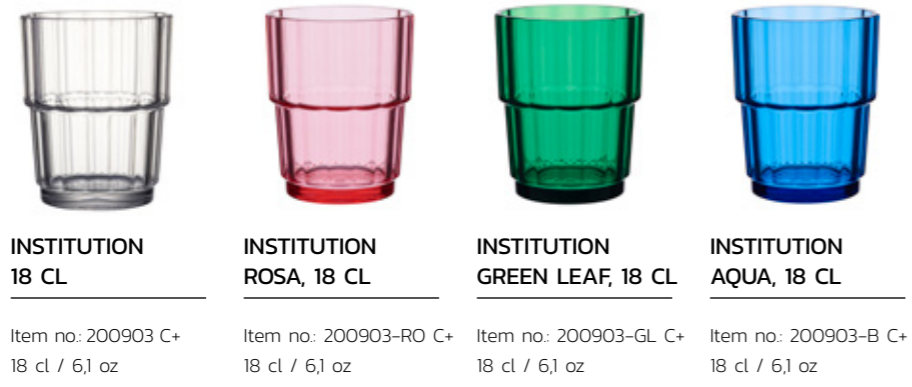
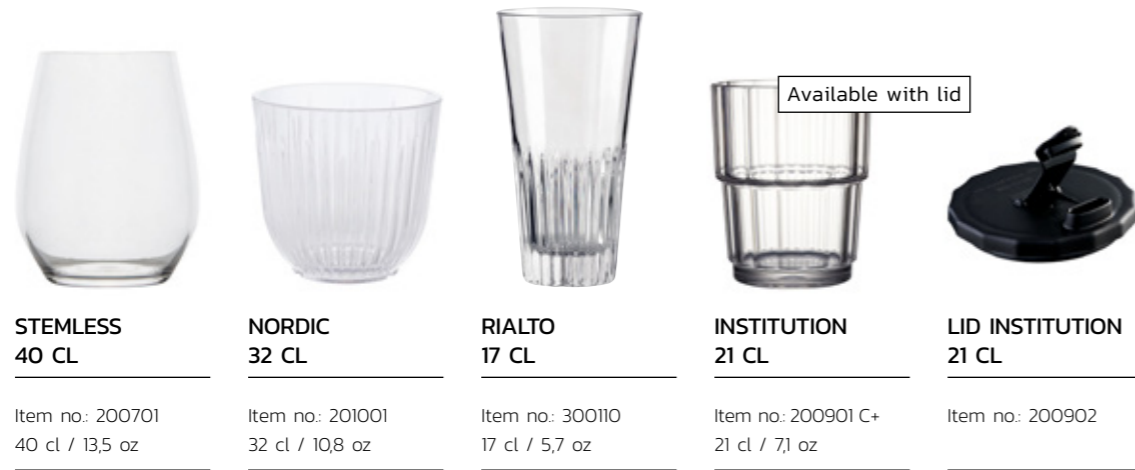


Gravity

| | | | |
|---|---|---|--|
|  |  |  |  |
| GRANITY 22 CL | GRANITY 32 CL | GRANITY 47 CL | GRANITY 35 CL |
| Item no.: 200100 22 cl / 7,4 oz | Item no.: 200101 32 cl / 10,8 oz | Item no.: 200102 47 cl / 15,9 oz | Item no.: 200110 35 cl / 11,8 oz |

| | | | | |
|---|---|---|---|---|
|  |  |  | | |
| GRANITY ROCK 24 CL | GRANITY ROCK 37 CL | GRANITY ROCK BASE 24 CL | | |
| Item no.: 200112 24 cl / 8,1 oz | Item no.: 200109 37 cl / 12,5 oz | Item no.: 999909 24 cl / 8,1 oz | | |
|  |  |  |  |  |
| GRANITY 30 CL | GRANITY 34 CL | GRANITY 0,8 L | GRANITY WHITE 47 CL | GRANITY 35 CL |
| Item no.: 200111 30 cl / 10,1 oz | Item no.: 200114 34 cl / 11,5 oz | Item no.: 200113 97 cl / 34 oz | Item no.: 200102-W,S 47 cl / 15,9 oz | Item no.: 200110-PP 35 cl / 11,8 oz |
|  |  |  |  |  |
| GRANITY ROCK WHITE 37 CL | GRANITY ROCK BLACK 37 CL | GRANITY ROCK GREY 37 CL | GRANITY ROCK DARK GREY 37 CL | GRANITY LID 37 CL |
| Item no.: 200109-W,S PP 37 cl / 12,5 oz | Item no.: 200109-B,L,S PP 37 cl / 12,5 oz | Item no.: 200109-G,S PP 37 cl / 12,5 oz | Item no.: 200109-DG,S PP 37 cl / 12,5 oz | Item no.: 200109-LID |

Drinking





Drinking



ALL-A GLASS

Item no: 200721
27 cl / 9,1 oz



**ALL-A GLASS
BLUE AQUA**

Item no: 200721-B
27 cl / 9,1 oz



**ALL-A GLASS
GREY SMOKE**

Item no: 200721-G
27 cl / 9,1 oz



**ALL-A GLASS
GREEN LEAF**

Item no: 200721-GL
27 cl / 9,1 oz



**ALL-A GLASS
WHITE**

Item no: 200721-WS PP
27 cl / 9,1 oz



**ALL-A GLASS
ROSA**

Item no: 200721-RO
27 cl / 9,1 oz



**ALL-A GLASS
PURPLE**

Item no: 200721-P
27 cl / 9,1 oz



**ALL-A GLASS
AMBER**

Item no: 200721-A
27 cl / 9,1 oz



High Ball



HIGH BALL
32 CL

Item no: 200105
32 cl / 10,8 oz



KÖLNER STANGE
24 CL

Item no: 200115
24 cl / 8,1 oz

Jasper



JASPER
27 CL

Item no: 200601
27 cl / 9,1 oz



JASPER
37 CL

Item no: 200603
37 cl / 12,5 oz



JASPER
28 CL HB

Item no: 200602
28,5 cl / 9,6 oz



JASPER
42 CL HB

Item no: 200604
42 cl / 14,2 oz



Nonic



NONIC
0,4 L

Item no.: 200201
42 cl / 14,2 oz

NONIC
0,5 L

Item no.: 200202
54 cl / 18,3 oz

Collins



COLLINS
27 CL

Item no.: 200501
27 cl / 9,1 oz

COLLINS
35 CL

Item no.: 200502
35,5 cl / 12 oz

COLLINS
42 CL

Item no.: 200503
42,5 cl / 14,4 oz

COLLINS
57 CL

Item no.: 200504
57 cl / 19,3 oz



Tulip



TULIP
0,25 L

Item no.: 999906
28 cl / 9,5 oz



TULIP
0,4 L

Item no.: 999907
42 cl / 14,2 oz



TULIP
0,5 L

Item no.: 999908
56 cl / 18,9 oz



TULIP
0,4 L

Item no.: 999904
40 cl / 13,5 oz



TULIP
0,5 L

Item no.: 999905
60 cl / 20,3 oz

Premium



**PREMIUM LIGHT
27 CL**

Item no: 200712
27 cl / 9,1 oz



**PREMIUM LIGHT
BLUE AQUA 27 CL**

Item no: 200712-B
27 cl / 9,1 oz



**PREMIUM LIGHT
GREY SMOKE 27 CL**

Item no: 200712-G
27 cl / 9,1 oz



**PREMIUM
35 CL**

Item no: 200711
35 cl / 11,8 oz



**PREMIUM
BLUE AQUA 35 CL**

Item no: 200711-B
35 cl / 11,8 oz



**PREMIUM
GREY SMOKE 35 CL**

Item no: 200711-G
35 cl / 11,8 oz



**PREMIUM
47 CL**

Item no: 200713
47 cl / 15,9 oz



**PREMIUM
BLUE AQUA 47 CL**

Item no: 200713-B
47 cl / 15,9 oz



**PREMIUM
GREY SMOKE 47 CL**

Item no: 200713-G
47 cl / 15,9 oz





Coffee



**COFFEE
26 CL**

Item no: 400100
26 cl / 8,8 oz



**COFFEE
DARK GREY 26 CL**

Item no: 400100-DG,S PP
26 cl / 8,8 oz



**COFFEE GREY
34 CL**

Item no: 400110-G,S
34 cl / 11,5 oz



**COFFEE STACK
DARK GREY**

Item no: 400120-DG,S PP
27 cl / 9 oz



**GRANITY ROCK
37 CL**

Item no: 200109
37 cl / 12,5 oz



**GRANITY ROCK
WHITE 37 CL**

Item no: 200109-WS PP
37 cl / 12,5 oz



**GRANITY ROCK
BLACK 37 CL**

Item no: 200109-BLS PP
37 cl / 12,5 oz



**GRANITY ROCK
GREY 37 CL**

Item no: 200109-G,S PP
37 cl / 12,5 oz



**GRANITY ROCK
DARKGREY 37 CL**

Item no: 200109-DG,S PP
37 cl / 12,5 oz



**GRANITY LID
37 CL**

Item no: 200109-LID



**COFFEE NORDIC
DARK GREY**

Item no: 400130-DG,S PP
32 cl / 10,8 oz



**COFFEE NORDIC
BRONZE**

Item no: 400130-BZ,S PP
32 cl / 10,8 oz



**COFFEE TO GO
35 CL**

Item no: 400303-PP
35 cl / 11,8 oz

** For coffee, tea or other hot beverages, we recommend using either grey or other coloured glassware. Coffee and tea can stain all types of plastic glassware after prolonged use.*

Beer



**BEER ON FOOT
0,3 L**

Item no.: 200103-SAN
30 cl / 10,1 oz



**BEER ON FOOT
0,5 L**

Item no.: 200104-SAN
50 cl / 16,9 oz



**BEER MUG
0,5 L**

Item no.: 200303-SAN
60 cl / 21 oz



**BEER MUG
1 L**

Item no.: 200302-SAN
110 cl / 37,2 oz



**WEISBEER
0,3 L**

Item no.: 200401-SAN
34 cl / 11,5 oz



**WEISBEER
0,5 L**

Item no.: 200402-SAN
56 cl / 18,9 oz



**BEER
0,4 L**

Item no.: 200411-SAN
43 cl / - oz



**BEER
0,5 L**

Item no.: 200412-SAN
63,5 cl / - oz



**NONIC
0,5 L**

Item no.: 200202
54 cl / 18,3 oz



**TULIP
0,5 L**

Item no.: 999908
56 cl / 18,9 oz

* The five-year warranty does not cover products made from SAN.





Decanters

| | | | |
|--|--|---|--|
|  <p>Lid incl.</p> |  <p>Lid incl.</p> |  |  <p>Stackable</p> |
| <p>DECANTER 500 CL</p> | <p>DECANTER 1 L</p> | <p>DECANTER 1,4 L</p> | |
| <p>Item no.: 500109 C+ 500 cl / 169 oz.</p> | <p>Item no.: 500105 C+ 1 L / 338 oz</p> | <p>Item no.: 500106 1,4 L / 473 oz.</p> | |
|  |  |  |  |
| <p>DECANTER 1 L</p> | <p>LID DECANTER 1 L</p> | <p>DECANTER 1,8 L</p> | <p>LID DECANTER 1,8 L</p> |
| <p>Item no.: 500101 1 L / 338 oz</p> | <p>Item no.: 500108</p> | <p>Item no.: 500110 1,8 L / 609 oz</p> | <p>Item no.: 500108</p> |
|  |  |  | |
| <p>PITCHER WHITE 1,5 L</p> | <p>PITCHER 1 L</p> | <p>PITCHER 3 L</p> | |
| <p>Item no.: 500102-PP 1,5 L / 507 oz</p> | <p>Item no.: 500103-BLS PP 1 L / 338 oz</p> | <p>Item no.: 500114 3 L / 066 gal</p> | |

Shots



SHOTS
3 CL

Item no.: 100201
3 cl / 1 oz



HOT SHOTS
6 CL

Item no.: 100203
6 cl / 2 oz



SHOT GRANITY
4 CL

Item no.: 100204
4 cl / 1,4 oz



SHOTS
2 CL

Item no.: 100205
2 cl / 0,7 oz



SHOTS
4 CL

Item no.: 100206
4 cl / 1,4 oz



SHOTS SVINGER
4 CL

Item no.: 100207
4 cl / 1,4 oz



SHOTS
2,5 CL

Item no.: 100208-M
2,5 cl / 0,85 oz



SHOTS HIGH BALL
6 CL

Item no.: 100213
6 cl / 2 oz



SHOTS TALL
6 CL

Item no.: 100214
6 cl / 2 oz



BOMB SHOT
8 CL

Item no.: 100308
8 cl / 2,8 oz



BOMB SHOT WHITE
8 CL

Item no.: 100302-PP
8 cl / 2,8 oz



SHOTS
3 CL

Item no.: PS-8
3 cl / 1 oz



SHOT WHITE
3 CL

Item no.: 100102-PP
3 cl / 1 oz



SHOT BLACK
3 CL

Item no.: 100103-BL,S PP
3 cl / 1 oz



SHOT WHITE
2 CL

Item no.: 100105-PP
2 cl / 0,7 oz



SHOTS TRAY

Item no.: 100210



SHOTS TRAY
BLACK

Item no.: 100210-BL,S



SHOTTUBE WITH
LID AND LABEL

Item no.: 100106-P
2 cl / 0,7 oz



SHOT STICKS

Item no.: 100400



SHOT COLOR
3 CL

Item no.: 100202-C
3 cl / 1 oz



SHOT COLOR
3 CL

Item no.: 100104-C,S PP
3 cl / 1 oz

Champagne



**CHAMPAGNE
EPERNEY**

Item no: 300112
20 cl / 6,8 oz



**CHAMPAGNE
FLUTE**

Item no: 300113
17 cl / 5,7 oz



**CHAMPAGNE
HIGHBALL**

Item no: 300114
20 cl / 6,8 oz



**CHAMPAGNE
11 CL**

Item no: 300115
11 cl / 3,7 oz



**CHAMPAGNE
17 CL "DENMARK"**

Item no: 300116
17 cl / 5,7 oz



**CHAMPAGNE
LUCE**

Item no: 300117
275 cl / 9,3 oz



**CHAMPAGNE LIGHT
FROSTED**

Item no: 300118
18 cl / 6,3 oz



**BELLINI
COUPE**

Item no: 300123
23 cl / 8 oz



**CHAMPAGNE
WHITE**

Item no: 300102-W,S PP
17 cl / 5,7 oz



**CHAMPAGNE
BLACK**

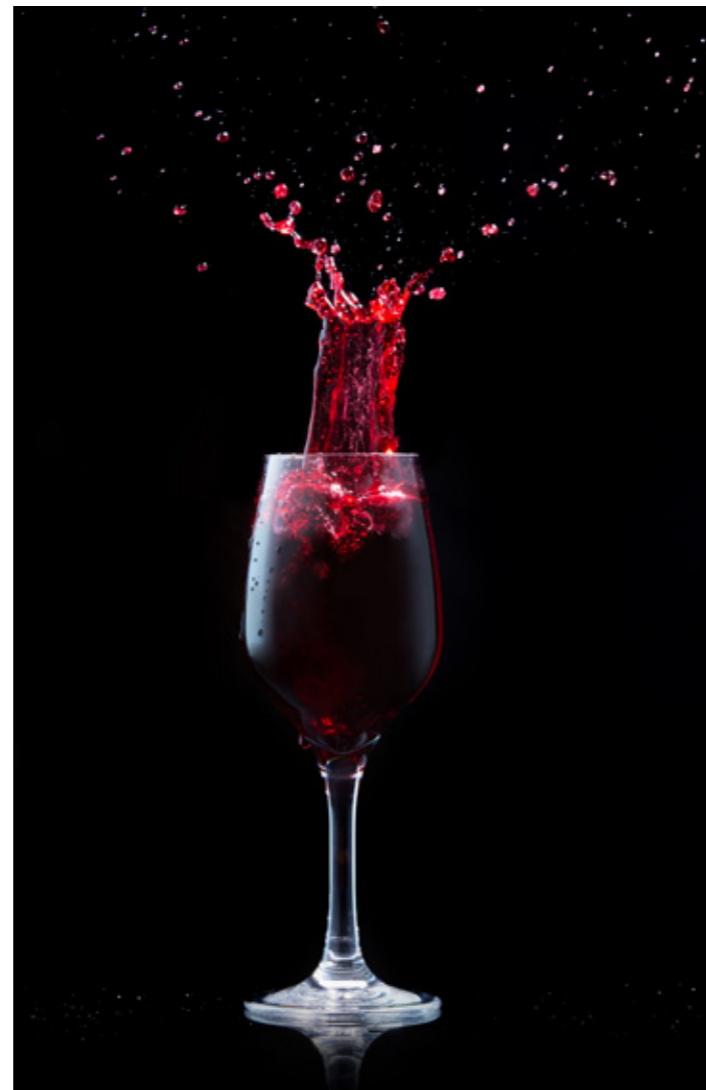
Item no: 300102-BL,S PP
17 cl / 5,7 oz



**CHAMPAGNE
FLUTE WHITE**

Item no: 300113-W,S PP
17 cl / 5,7 oz





Wine



WINE
28 CL

Item no: 300105
28 cl / 9 oz



WINE
38 CL

Item no: 300106
38 cl / 12,8 oz



WINE
47 CL

Item no: 300125
47 cl / 15,9 oz



WINE
25 CL

Item no: 300121
25 cl / 8,5 oz



WINE FROSTED
25 CL

Item no: 300151
25 cl / 8,5 oz



WINE FROSTED
35 CL

Item no: 300152
35 cl / 11,8 oz



WINE TASTE
20 CL

Item no: 300196
20 cl / 6,8 oz



WINE WHITE
COLOR 38 CL

Item no: 300106-W5
38 cl / 12,8 oz



STEMLESS
40 CL

Item no: 200701
40 cl / 13,5 oz

Light



**GRANITY LIGHT
24 CL**

Item no.: 200133
24 cl / 8,1 oz



**GRANITY LIGHT
32 CL**

Item no.: 200134
32 cl / 10,8 oz



**GRANITY LIGHT
32 CL**

Item no.: 200132 C+
32 cl / 10,8 oz



**GRANITY LIGHT
39 CL**

Item no.: 200135-PP
39 cl / 13,2 oz



**CHAMPAGNE LIGHT
FROSTED**

Item no.: 300118
18 cl / 6,3 oz



**WINE FROSTED
25 CL**

Item no.: 300151
25 cl / 8,5 oz



**WINE FROSTED
35 CL**

Item no.: 300152
35 cl / 11,8 oz

* The five-year warranty does not cover products made from SAN or the products in our LIGHT series.





Cocktail



**COCKTAIL
20 CL**

Item no: 300100
20 cl / 6,8 oz



**COCKTAIL
40 CL**

Item no: 300101
40 cl / 13,5 oz



MARTINI

Item no: 300103
20 cl / 6,8 oz



COPA

Item no: 300107
70 cl / 23,7 oz



MARGARITA

Item no: 300108
33 cl / 11,2 oz



HURICANE

Item no: 300109
38 cl / 12,8 oz



DRINKING JAR

Item no: 200921-SAN
41 cl / 13,9 oz



BELLINI COUPE

Item no: 300123
23 cl / 8 oz



**PREMIUM
35 CL**

Item no: 200711
35 cl / 11,8 oz



**PREMIUM
47 CL**

Item no: 200713
47 cl / 15,9 oz

Food accessories

For a healthier and lighter working environment - weighs 60% less than ordinary glass and no more accidents with broken glass.



The environmentally friendly alternative to disposable products, disposable glasses and single-use cups. The future is recycling and reuse.

FOR LONGER DURABILITY

If you want to extend the useful lifespan of your glassFORever products, you must treat them well. Here is some good advice.

1. Use the same dishwasher powder/tablets that your machine normally uses.
2. When washing by hand, make sure to use a soft sponge, brush or microfibre cloth. It is not neces-

sary to use a particular dishwasher liquid, but we recommend using our own product, Renovate Powder.

3. To remove any soap residue, rinse the product in clean water and dry the last drops with a soft, damp sponge, cloth or a tea towel.
4. Do NOT use petrol, alcohol, ester or organic solvents to clean the products.



FOR the best possible washing results and the best experience with your glassFORever product:

When washing, the water hardness should be approx. 0 °dH.

Correct dosing of rinse aid and detergent – we recommend at least one annual inspection of all dishwashers.

Dairy products, milk, coffee, hot chocolate, tea and fruit juices can leave an 'edge' on the product (a so-called 'office cup'). To deal with this, place or wash the glass in warm soapy water immediately after use or use our cleaning product Renovate Powder on a regular basis.

For coffee, hot chocolate and tea, we recommend a coloured glass or cup. Slight discoloration may occur after prolonged use.

FOR best results:

If you want to treat your glassFORever products in the best possible way, we recommend that you read our washing instructions.



“ We have a good and innovative cooperation with glassFORever, who are very open to new ideas. The quality of their unbreakable plastic glassware is outstanding.

Heinrich Schrøder, StreetFood Vejle.

FOR EXISTING CUSTOMERS

We have also established a very convenient system for existing customers who have acquired our products, but who would like to replace some of them with new glassware. Don't throw the glasses away.

We will buy back old products so that we can reuse the plastic, and then you can buy the new products you need.

GLASSFOREVER A/S

Andkaervej 26 A
7100 Vejle

Tlf.: +45 25 42 16 39

Mail: mail@glassforever.com

Cvr-nr. 31 84 69 27

www.glassforever.com



glass^{FOR}ever